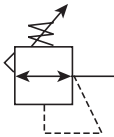


05R Regulators – Economy

- Secondary aspiration plus balanced poppet provides quick response and accurate pressure regulation
- Rolling diaphragm for extended life
- Removable non-rising knob for panel mounting and tamper resistance
- Easily serviced
- Reverse flow
- 1/4", 3/8" ports (NPT)



| Operating information | | |
|---|--|--------------------------------|
| Supply pressure (max): 0 to 300 psig (0 to 20.7 bar) For secondary pressure ranges see charts next page. | | |
| Operating temperature: 32°F to 175°F (0°C to 80°C) Low temperature -4°F to 125°F (-20°C to 52°C) | | |
| Flow capacity†: | | |
| High flow | | 1/4" 30 scfm (14.2 dm³/s, ANR) |
| | | 3/8" 40 scfm (18.9 dm³/s, ANR) |
| Gauge ports (2): | | 1/4 inch |
| Weight: | | 1.1 lb (0.49 kg) |
| † scfm = Standard cubic feet per minute at 100 psig inlet, 90 psig no flow secondary setting and 10 psig pressure drop. | | |

Ordering Information:

| Port Size | Description | Part Number |
|-----------|----------------------------------|-------------|
| 1/4" | 2-125 psi w/out Gauge, Relieving | 05R113AD |
| 1/4" | 2-200 psi w/out Gauge, Relieving | 05R114AD |
| 3/8" | 2-125 psi w/out Gauge, Relieving | 05R213AD |
| 3/8" | 2-200 psi w/out Gauge, Relieving | 05R214AD |

NOTE: 1.53 Dia. (39 mm) hole required for panel mounting.

 Most popular.



For inventory, lead times, and kit

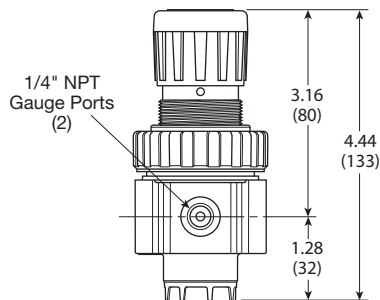
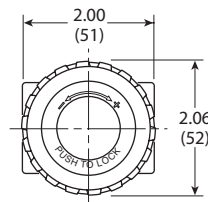
Economy Regulators

Material Specifications

| | |
|----------------------------|---------|
| Adjusting stem | Brass |
| Bonnet | Plastic |
| Body | Zinc |
| Collar, Knob | Plastic |
| Diaphragm | Nitrile |
| Poppet & cap | Plastic |
| Seals | Nitrile |
| Springs – poppet & control | Steel |

Repair and Service Kits

| | |
|--|--------------------|
| Bonnet assembly kit | PS915P |
| Control knob | P04420 |
| 1-1/2" dial face 30 psig (0 to 2.1 bar), gauge | K4515N14030 |
| 1-1/2" dial face 60 psig (0 to 4.1 bar), gauge | K4515N14060 |
| 1-1/2" dial face 160 psig (0 to 11.0 bar), gauge | K4515N14160 |
| 1-1/2" dial face 300 psig (0 to 20.7 bar), gauge | K4515N14300 |
| 2" dial face 60 psig (0 to 4.1 bar), gauge | K4520N14060 |
| 2" dial face 160 psig (0 to 11.0 bar), gauge | K4520N14160 |
| 2" dial face 300 psig (0 to 20.7 bar), gauge | K4520N14300 |
| Mounting bracket kit | PS963P |
| Panel mount nut – metal | PS964P |
| 1-30 psig spring | P04427 |
| 1-60 psig spring | P04426 |
| 2-125 psig spring | P04425 |
| 2-200 psig spring | P02934 |
| Relieving service kit | PS908P |

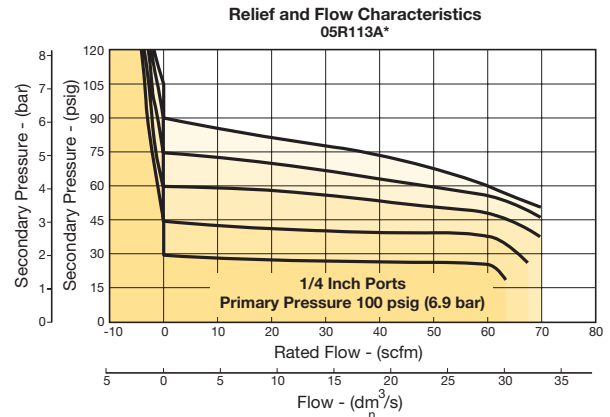


Inches (mm)

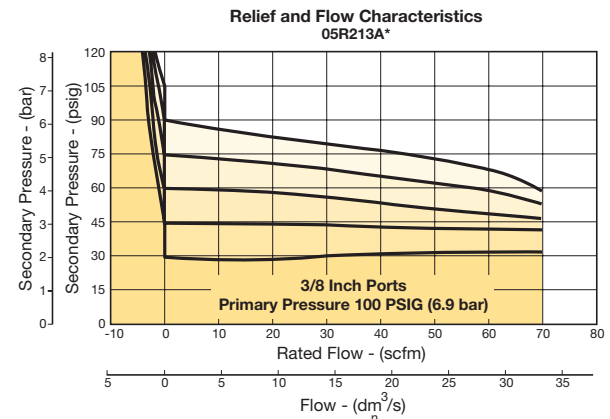
Prep-Air II Series

Flow Charts

05R 1/4" Regulator



05R 3/8" Regulator



WARNING

**Product rupture can cause serious injury.
Do not connect regulator to bottled gas.
Do not exceed Maximum primary pressure rating.**

CAUTION:

REGULATOR PRESSURE ADJUSTMENT – The working range of knob adjustment is designed to permit outlet pressures within their full range. Pressure adjustment beyond this range is also possible because the knob is not a limiting device. This is a common characteristic of most industrial regulators, and limiting devices may be obtained only by special design. For best performance, regulated pressure should always be set by increasing the pressure up to the desired setting.



For inventory, lead times, and kit